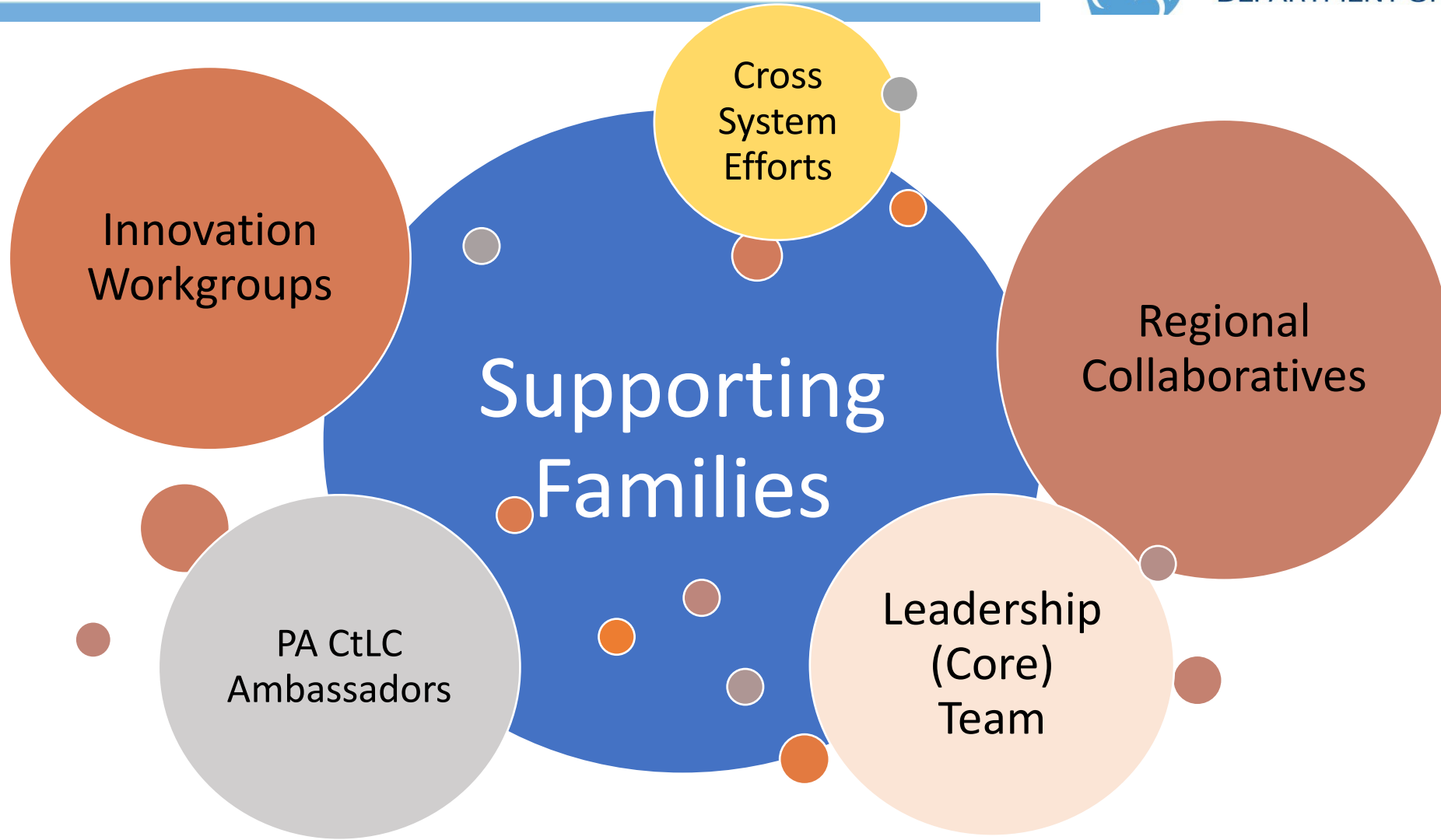


ISAC Recommendation #4 – Support Families Throughout the LifeSpan

6/11/2024







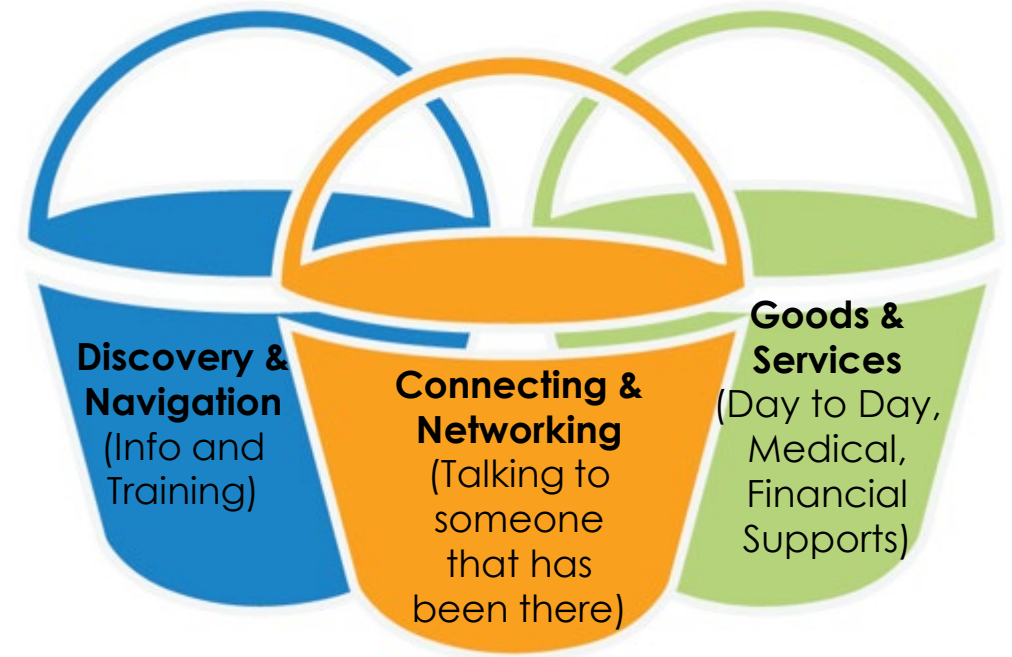
We use Charting the LifeCourse to Influence, Innovate, and Transform: Policy, Practice, and Culture

WHAT?

PA's CoP for Supporting Families is guided by the
ISAC Recommendation 4



Informed by the LifeCourse Framework

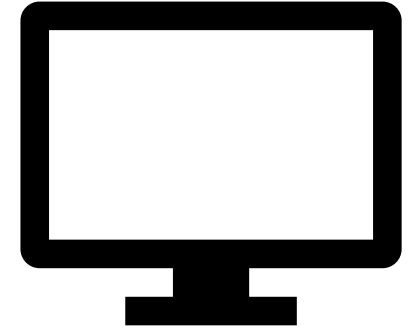


Now

- Electronic Case Management
- Supporting Families through Regional Collaboratives
- Collaboration on two federal grants
 - InVEST
 - Pathways to Partnership

Next

- Scaling Charting the LifeCourse in PA



Electronic Case Management

Supporting Families



Click on the County below to get involved.

All counties in Pennsylvania participate in the Supporting Families Initiative



Regional Collaboratives

Supporting Families



Coordinator Book Club Established

Life Trajectory Worksheet

Positive Past/Current Experiences:

- 23-24 Book Club - Cultivating Communities of Practice, Wenger, McDermott, & Snyder
 - Clarified activities of the collaborative & how to run it & help others
 - Gave confidence with guidance from the book and discussions
 - Fostered relationships and learned to connect with one another
 - Learned how to take care of themselves
- Reached out to counties and joined/attended their employment meetings and/or talk about their Collaborative
- Be intentional and share the message about why we are doing what we are doing.
- Building membership and relationships with partners like SAU1 and PA Family Network and partners across the life span like schools
- Annual Summits
- Quarterly Regional meetings for Regional Collaboratives

Challenges:

- All counties run so differently. Figuring out how I make things that I like work within the parameters of my own county.
- Book club format challenges
 - Not enough structure/focus for some people/topics
 - Time commitment
 - Focusing on longer chapters

Icons at the bottom: a row of six small icons representing different aspects of community and support.



Future Experiences:

- Visit schools in partnership with ODP to raise expectations and build relationships
 - Touch base with parents, have informational tables for parents including resources in the county, state
- More informal connections with other Coordinators with a specific intention/focus
 - Repeat book club with the same book
 - Or offer a "boot camp" for Coordinators
 - Continue book club with a new book or using articles

Things to Keep in Mind:

- Supporting Families is broader than the local employment coalitions, though they are often hand in hand

Regional Collaboratives for Supporting Families - Coordinators' Vision

High level of Coordinator confidence and competence in their role.

PA Regional Collaboratives for Supporting Families to be successful.

Create space for coordinators to speak freely and learn from each other.

What I DON'T Want

For the learning communities to be irrelevant.



Cross System Collaboration

Through PA's CoP for Supporting Families

Why Scale Across Systems?

Because as we age and move through life, we look to different systems for support depending on our age, and what part of our life we need the help with.



InVEST

The InVEST Project addresses barriers to competitive integrated employment (CIE) for individuals with disabilities in a person-centered, strengths-based and community-integrated approach by using the Charting the LifeCourse (CtLC) Framework and tools.

Pathways to Partnership

Professional Development & Capacity Building

- Train DIF: PTP partners to become Charting the Life Course Ambassadors
- Provide Charting the Life Course training to employers
- Deliver Transition Discoveries training to professionals, students, and families

Our Vision for Supporting Families

Current Practices

ODP training contracts

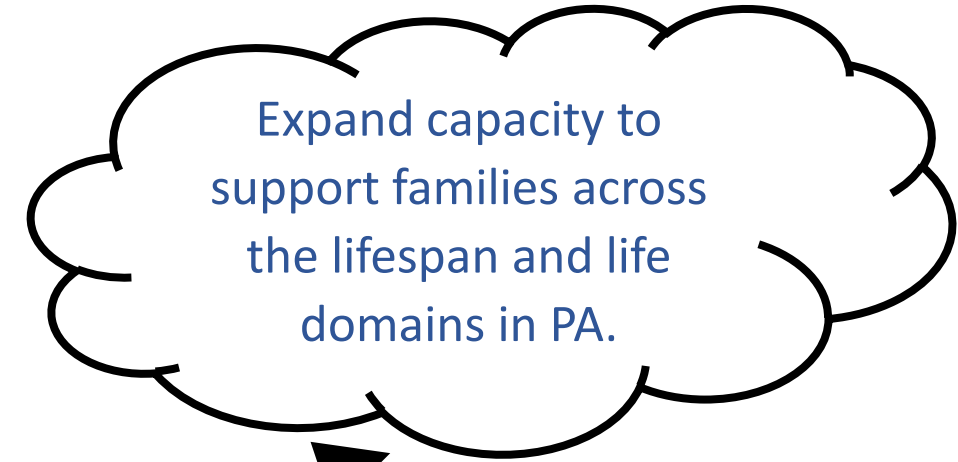
CoP for Supporting Families Activities

- Leads for Supporting Families trainings – Introductions to CtLC & Supporting Families, Summit for Regional Collaboratives
- Innovation Workgroups
- ListServ

New Practices Needed

A hub in PA that is focused on:

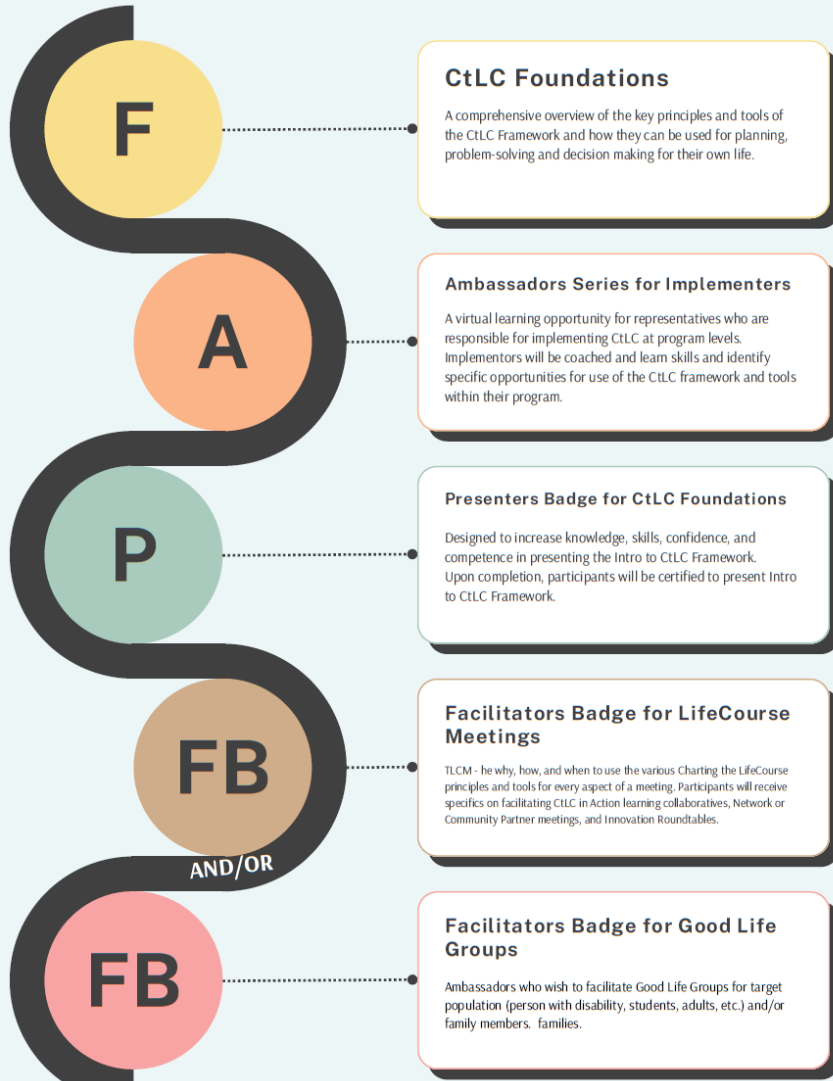
- Supporting Families is the primary goal to apply CtLC across systems
- Training Pathway
 - to expand the capacity of our stakeholders
 - To expand the capacity across systems and with their stakeholders



Needing to use UMKC for all or most trainings and technical assistance.

Application of the Charting the LifeCourse Framework to lose the focus in our vision for Supporting Families.

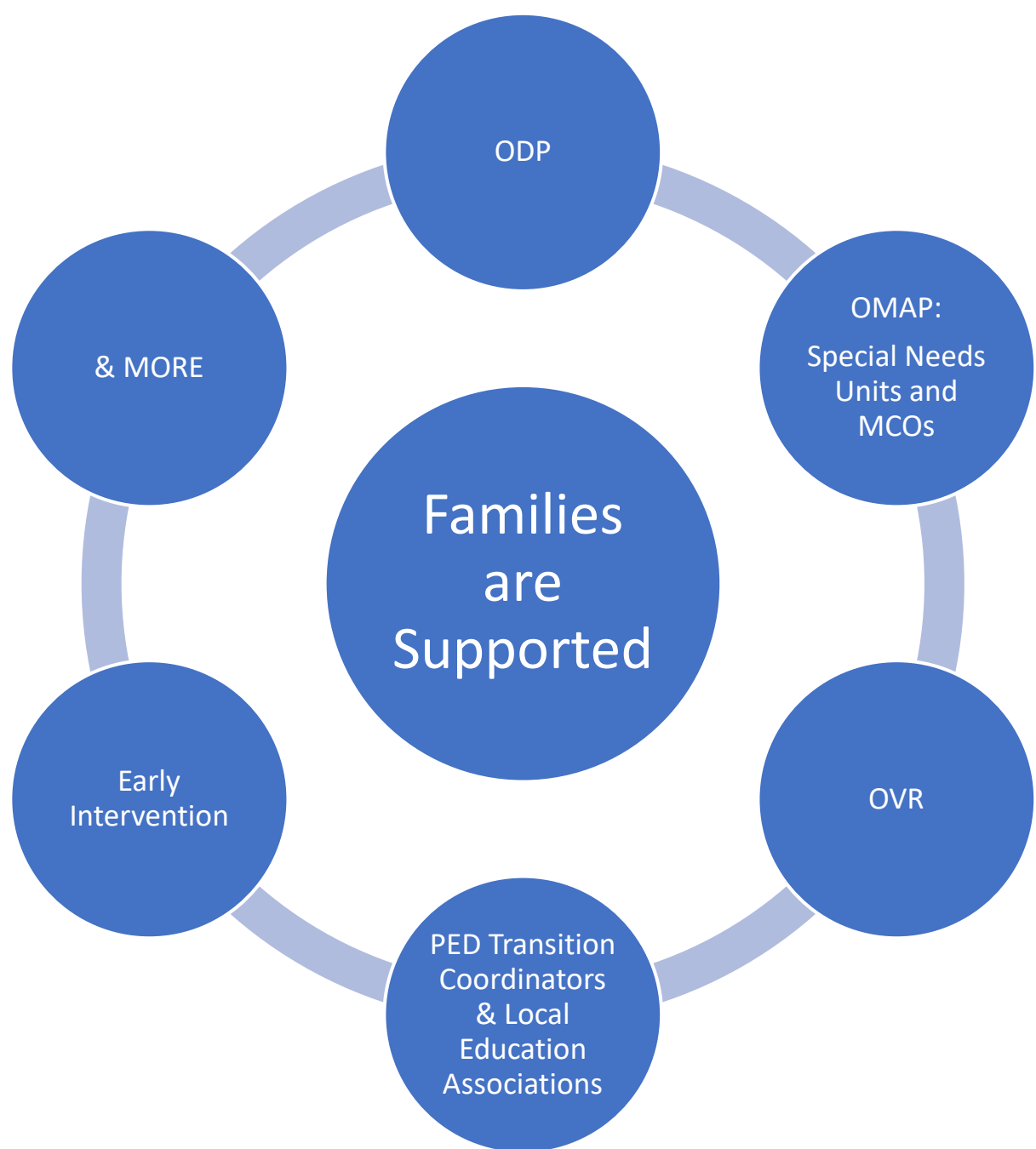
CtLC Training Pathway for PA



6/3/2024

We're designing the CtLC Training Pathway for PA with UMKC & the Grant Teams

So that
expansion and
refinement
can continue!



ISAC Feedback & Suggestions



Stay Tuned In

Subscribe to ODP's Supporting Families ListServ

[HERE](#)

