



Health Measures

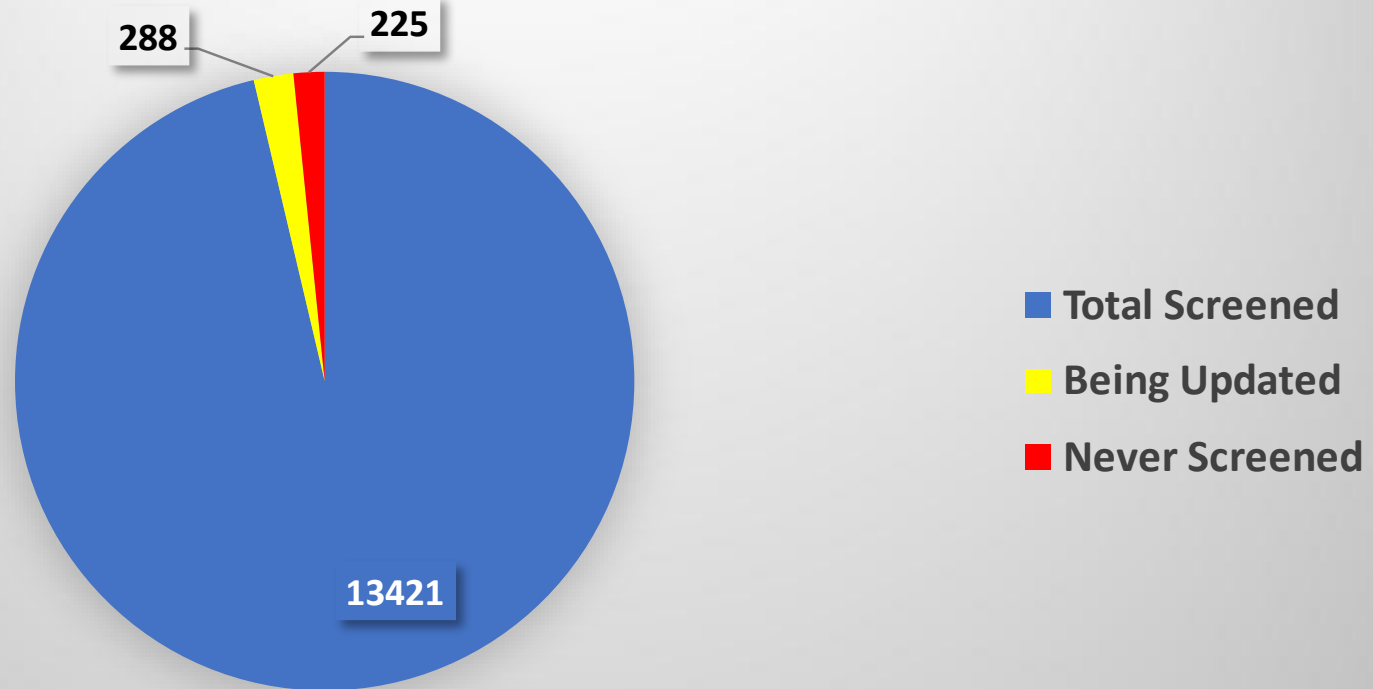
Provider Performance Review
Subcommittee

June 2024

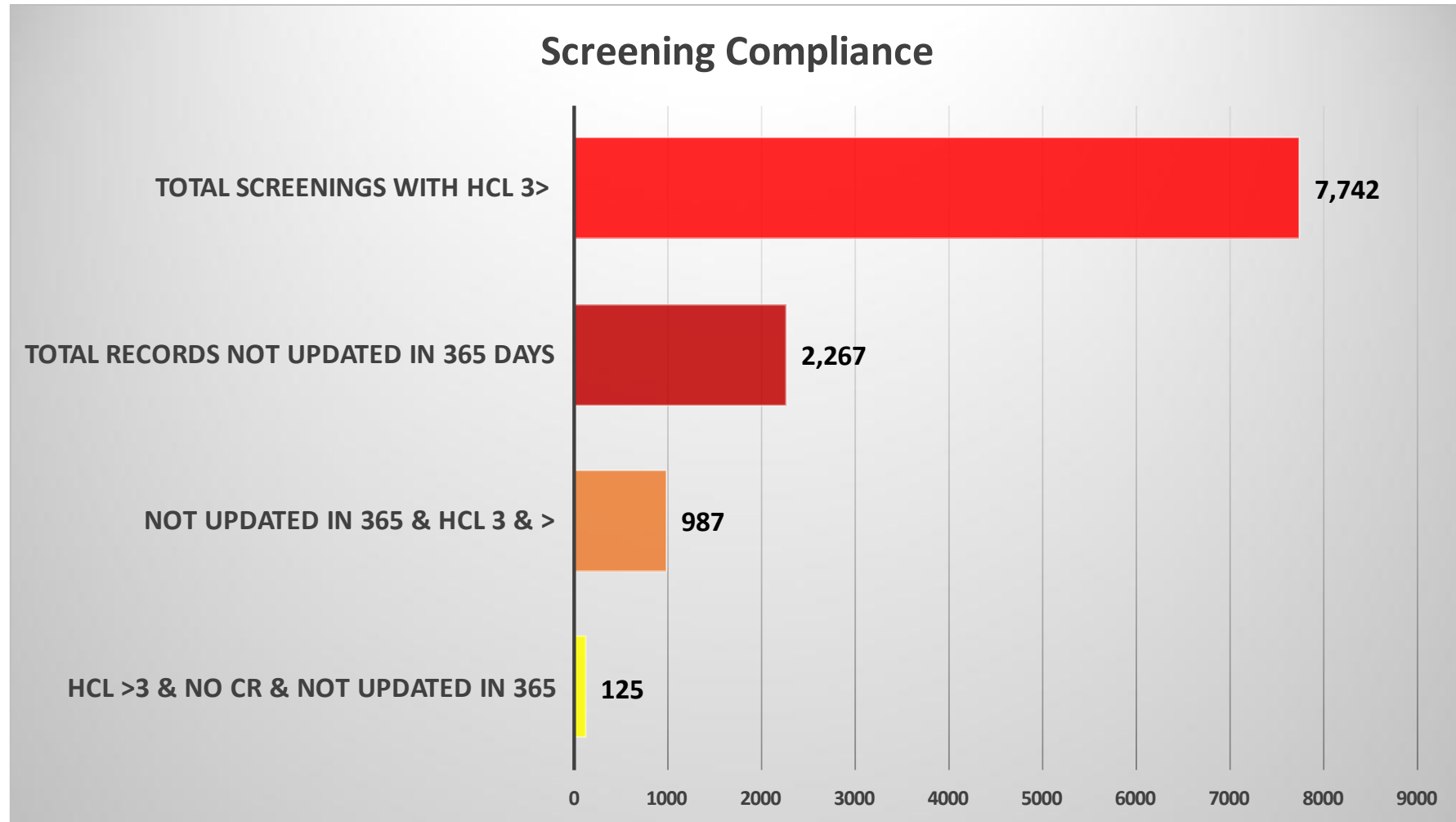
Percentage of Individuals in Residential Screened (HRS) as of April 2024

fl

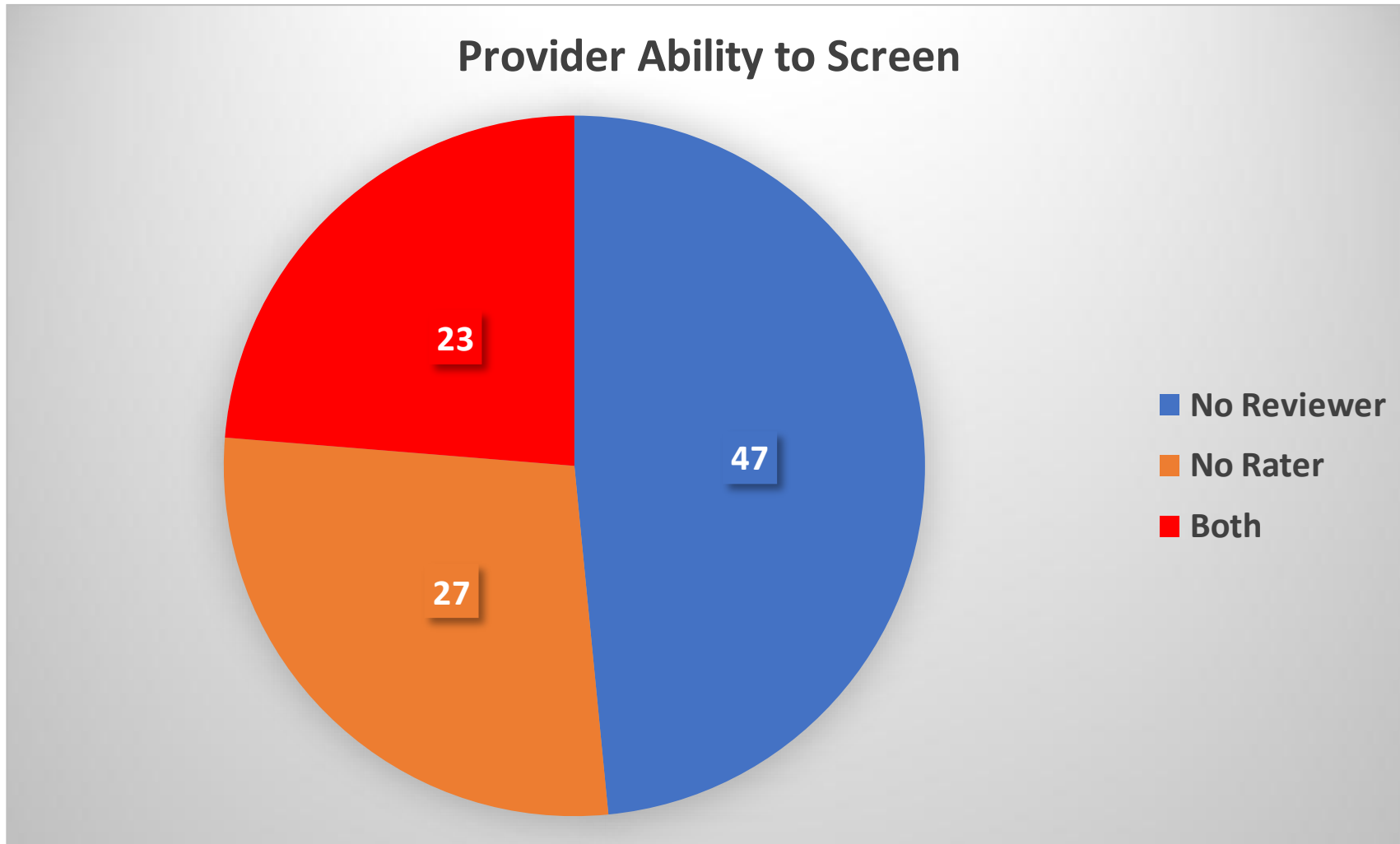
Total Population 14313
94% Currently Screened



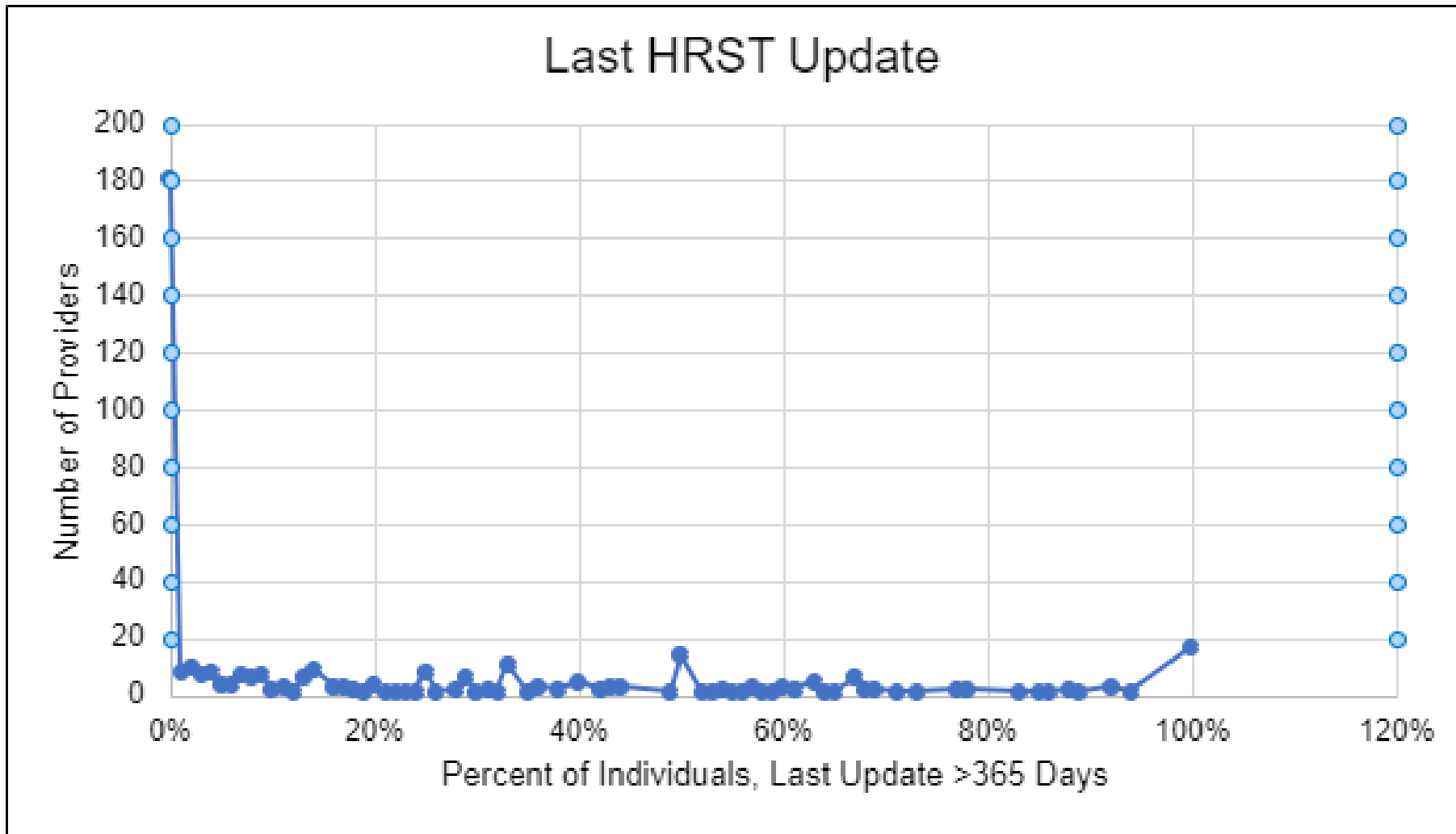
HRST Screening Compliance as of April 2024



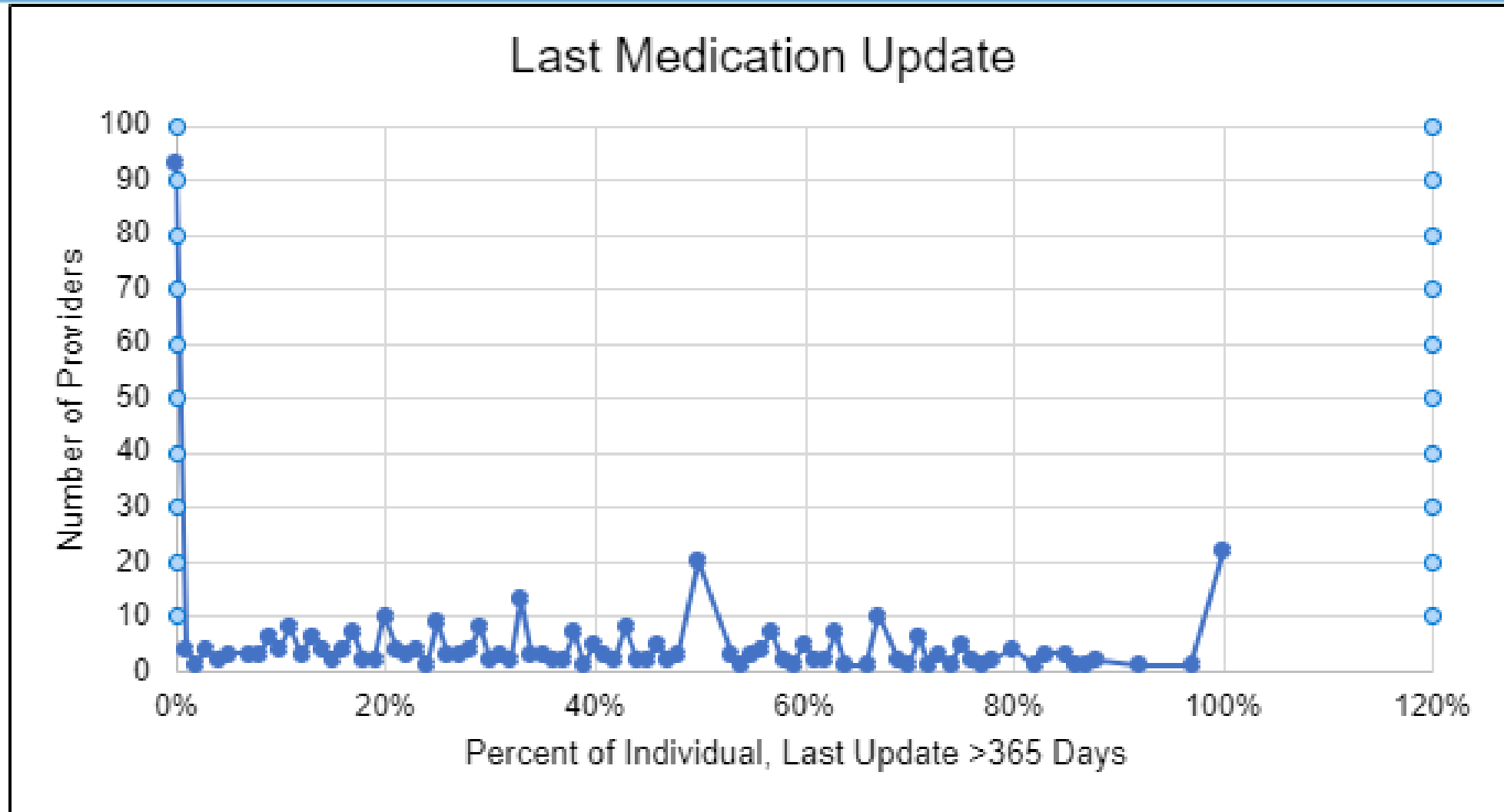
Provider Ability to Screen as of April 2024



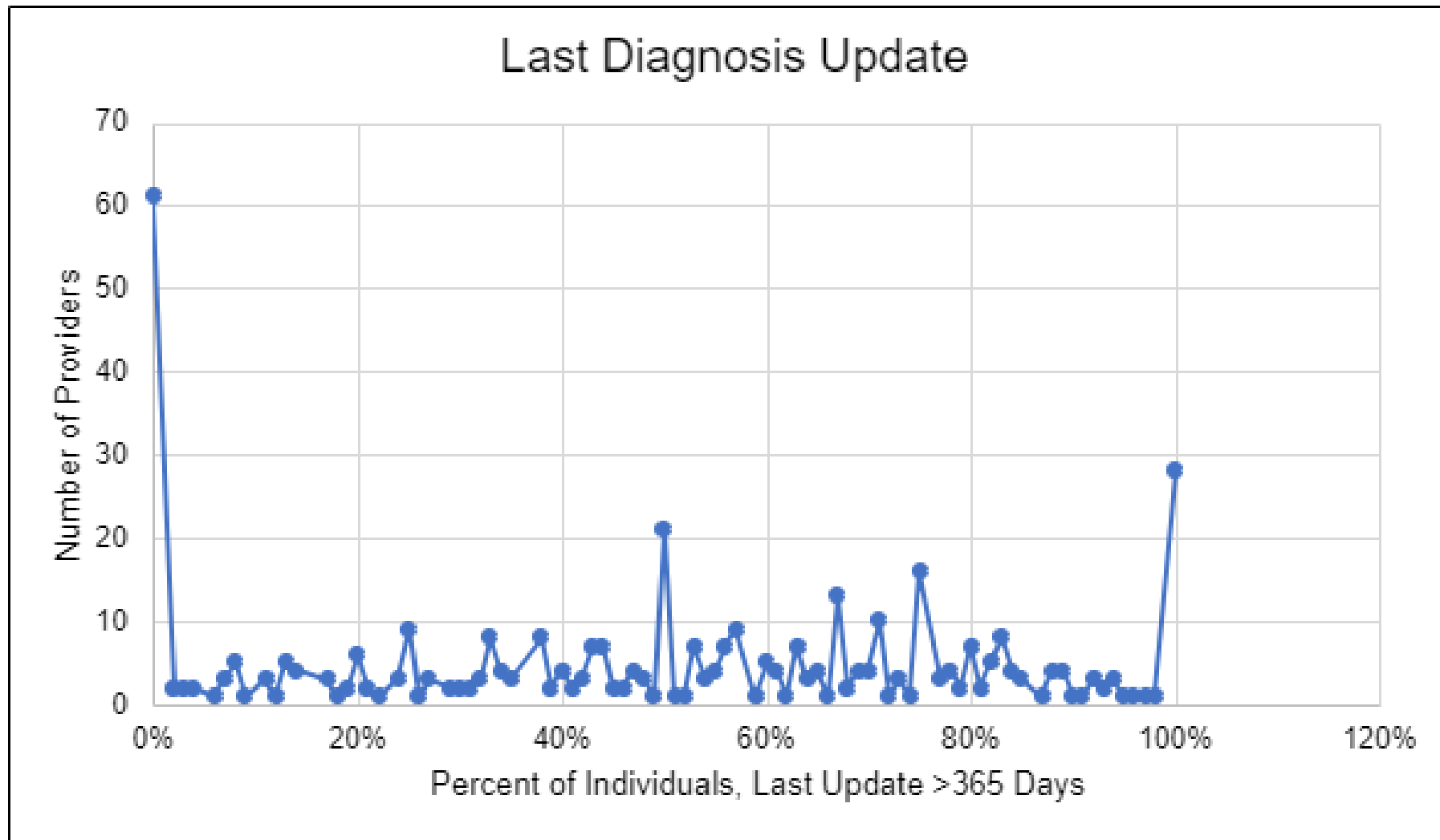
Last HRST Screening Update Over 365 Days



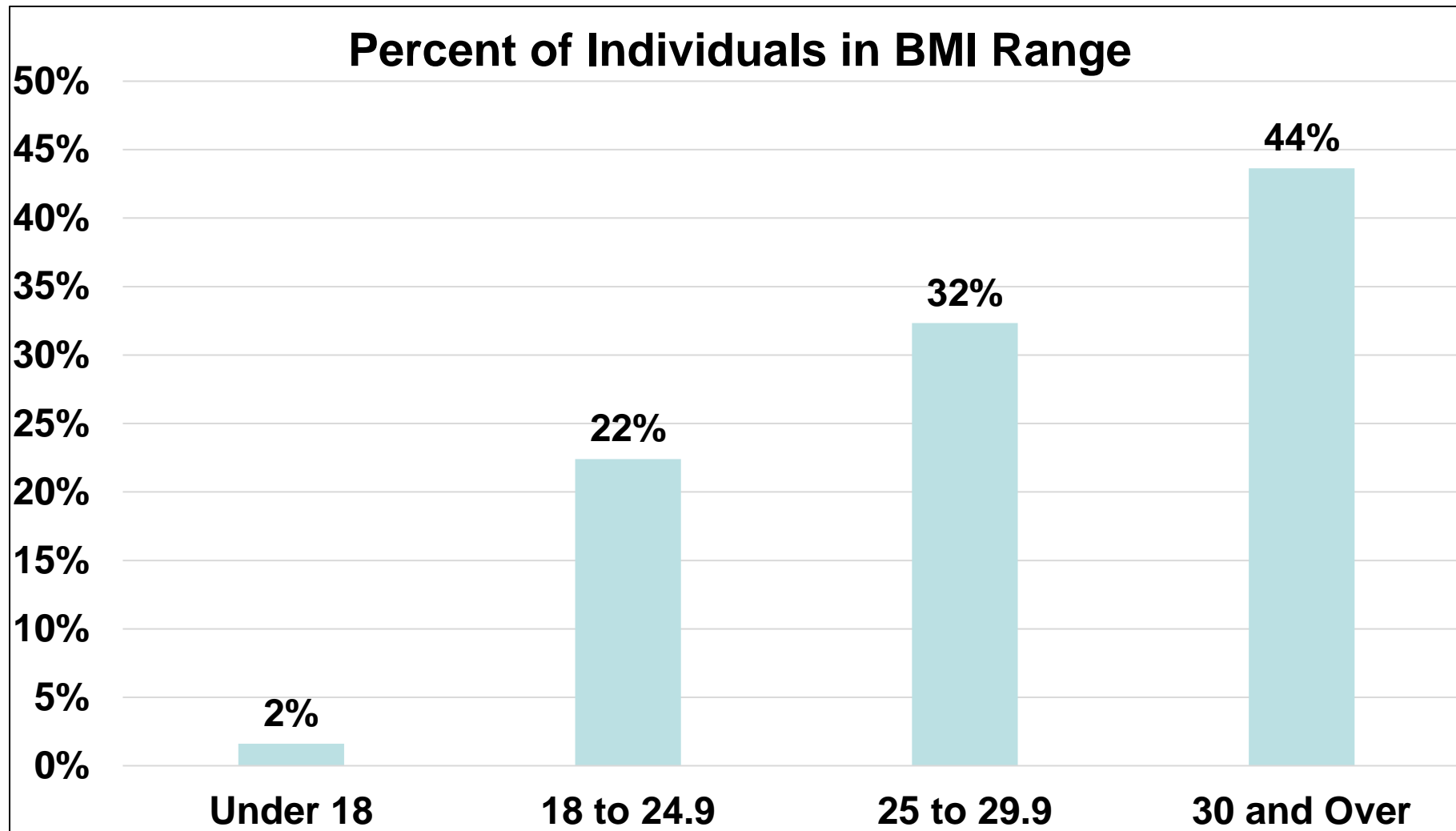
HRST Last Medication Update Over 365 Days



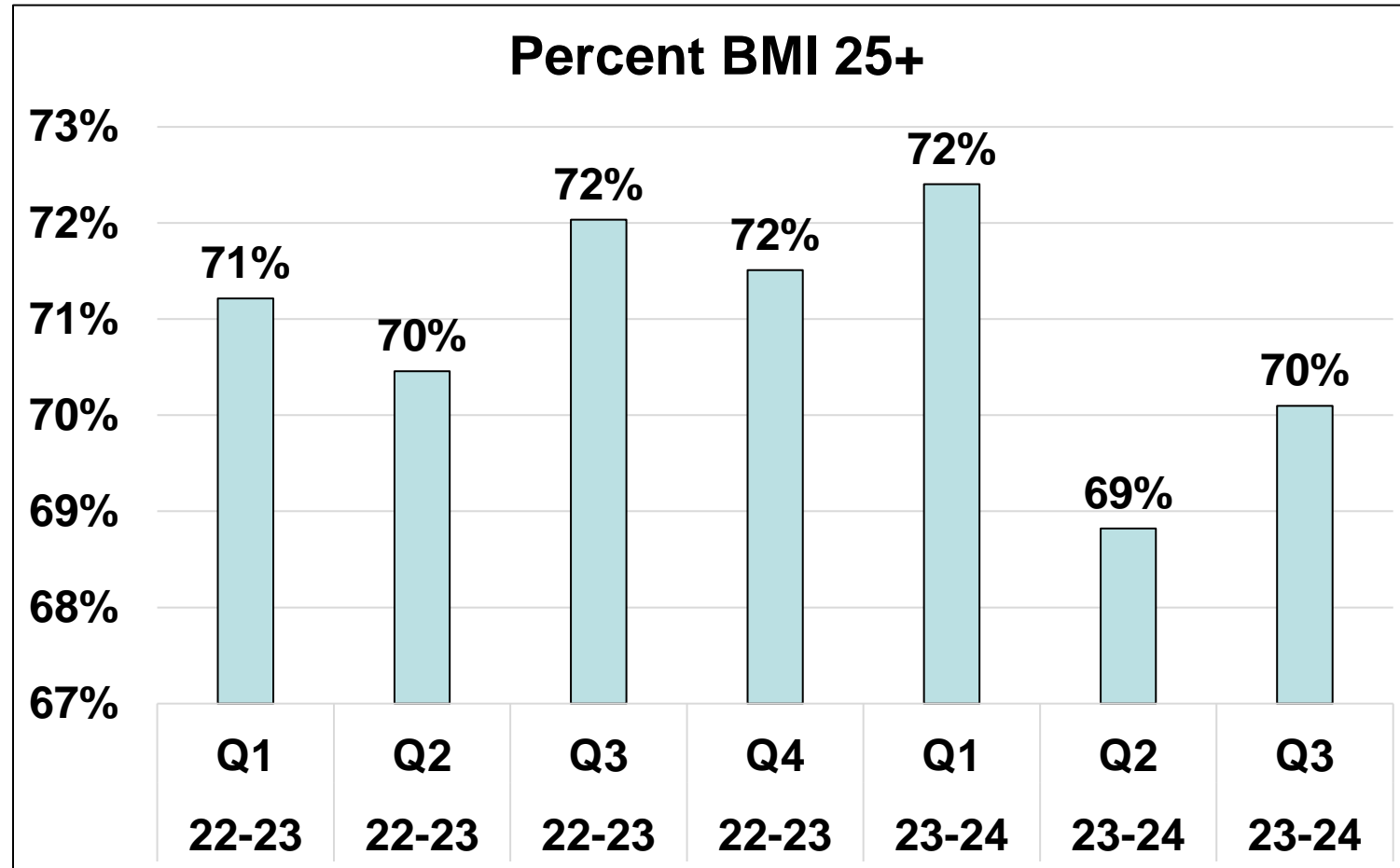
Last HRST Diagnosis Section Update Over 365 Days



Body Mass Index Ranges Recorded in HRST

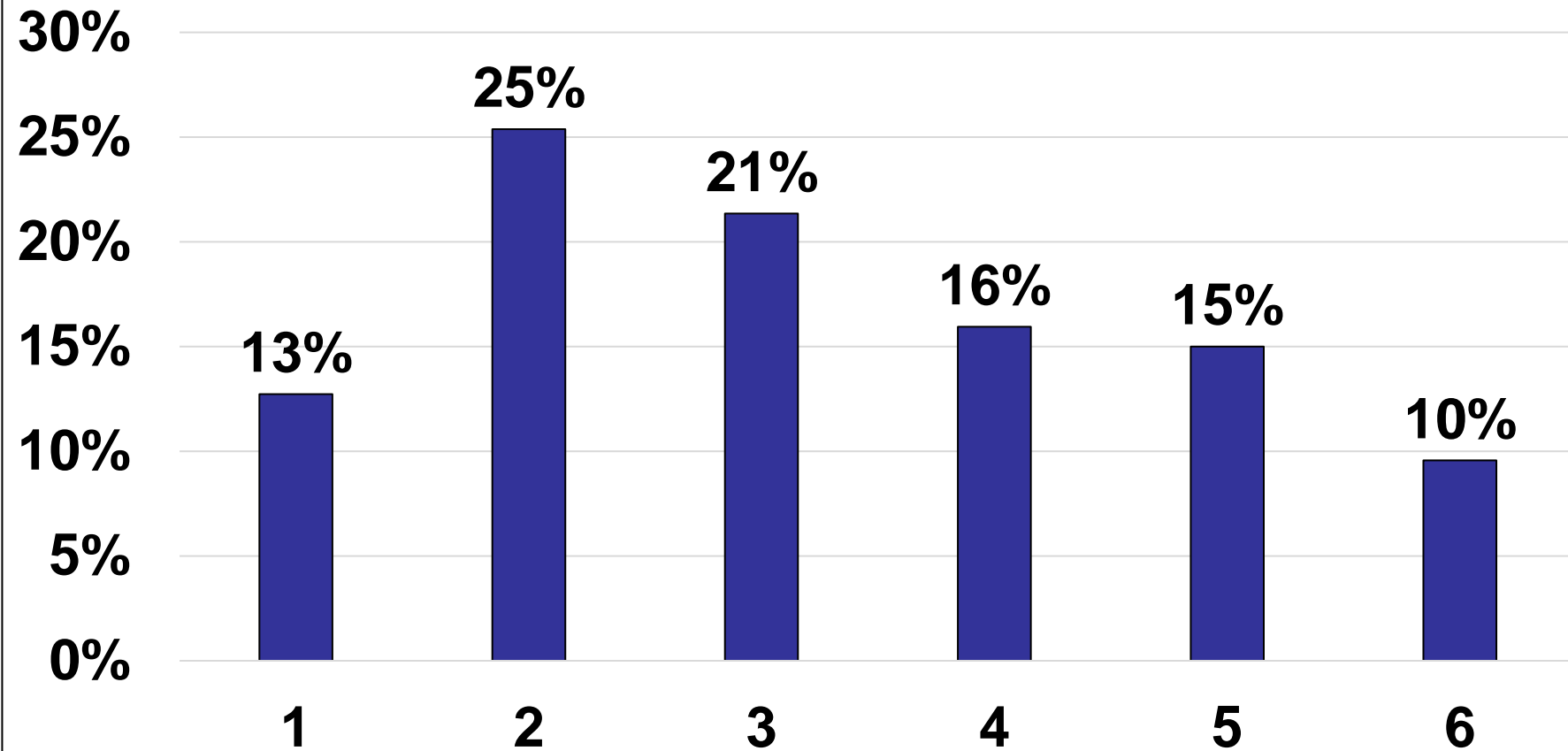


Body Mass Index Recorded in the HRST



Health Care Level

Percent of Individuals in Health Care Level



Percent of Individuals in HSRT with Hypertension or Diabetes

